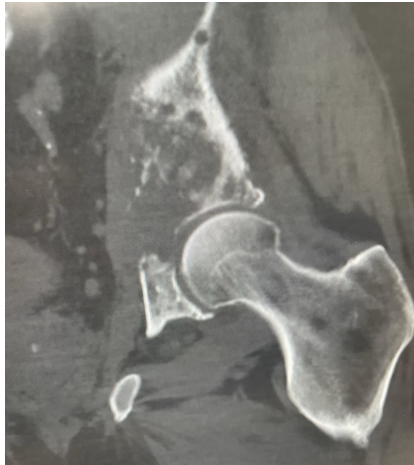


Case Illustrations

Pathologic Pelvis Fracture



The 63-year-old patient presented with a pathologic acetabulum/hemi-pelvic fracture, and osteolysis with uncontained defect from metastatic lung cancer and additional co-morbidities. The patient has been treated with radiation for metastatic bone disease of the pelvis, and was bed ridden living in a skilled nursing facility due to severe pain and dysfunction resulting from his pathologic pelvis fractures. The patient was brought to surgery and IlluminOss implants were inserted percutaneously through the posterior column, anterior column and LC2 to provide fill and stability for the uncontained osteolytic defect. The implants were filled with a photodynamic liquid monomer and cured with visible blue light. At post-op day 1, the patient was weight bearing as tolerated using a walker. The patient was discharged back to the SNF on post operative day 1 and then from the SNF to home at 2 weeks post procedure. At 6 weeks follow up, patient uses the walker in the community and ambulates unassisted intermittently at home.

US Indication: The IlluminOss Photodynamic Bone Stabilization System is indicated for use in skeletally mature patients in the treatment of traumatic, fragility, pathological, and impending pathological fractures of the humerus, radius, ulna, clavicle, pelvis, fibula, metacarpals, metatarsals, and phalanges. The IlluminOss Photodynamic Bone Stabilization System can also be used in conjunction with FDA-cleared fracture fixation system to provide supplemental fixation in these anatomic sites. The IlluminOss System may be used in the femur and tibia to provide supplemental fixation to an anatomically appropriate FDA-cleared fracture fixation system.

For more detailed procedural information including Warnings, Cautions, Risks & Contraindications, please see the respective IlluminOss Surgical Technique Guide, Package insert or visit www.illuminooss.com.

www.illuminooss.com

993 Waterman Avenue
East Providence, RI 02914
Case Support: [833-LITE-FIX](tel:833-LITE-FIX)

in 
900762_A