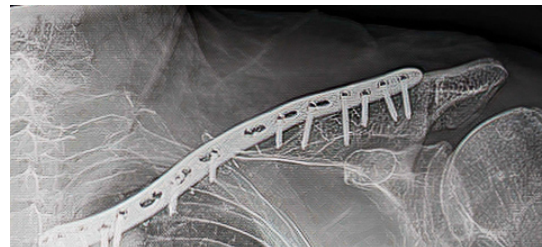
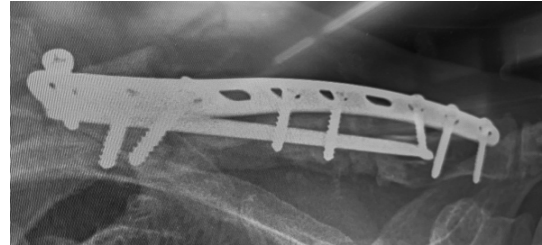


Case Illustration

Clavicle with Plate

An 83-year-old male experienced a fracture of the left clavicle associated with metastatic disease. During a previous operative procedure large parts of the clavicle were removed and the clavicle was appropriately shortened. The residual gap in the clavicle was supported with a Titanium Elastic Nail (TENs) that was inserted into the proximal and distal ends of the clavicle and sealed in place with bone cement. In addition to the TENs nail, a plate spanned the gap with the ends of the plate affixed to the ends of the construct with screws. The result was unstable and very painful for the patient.

During a revision procedure, the plate and TENs nail were removed, and an IlluminOss Implant was delivered from the lateral side, bridged the gap and inserted into the medial segment. The spanning implant connected the two remaining fragments of the clavicle. The implant was filled with monomer and cured with visible light. After curing, the construct was further stabilized with the placement of a longer plate and screwed in place. Post procedure, the patient has satisfactory stability and is pain-free.



US Indication: The IlluminOss Photodynamic Bone Stabilization System is indicated for use in skeletally mature patients in the treatment of traumatic, fragility, pathological, and impending pathological fractures of the humerus, radius, ulna, clavicle, pelvis, fibula, metacarpals, metatarsals, and phalanges. The IlluminOss Photodynamic Bone Stabilization System can also be used in conjunction with FDA-cleared fracture fixation systems to provide supplemental fixation in these anatomic sites. The IlluminOss System may be used in the femur and tibia to provide supplemental fixation to an anatomically appropriate FDA-cleared fracture fixation system.

EU Indication: The Photodynamic Bone Stabilization System is indicated for use in fracture alignment reduction. It provides stabilization for bone fractures using a minimally invasive technique in which the bone is not subjected to significant weight bearing forces. This IlluminOss procedure pack is intended for use in treatment of the metacarpal, phalange, clavicle, radius, ulna, distal radius, olecranon and fibula. It is also intended for use in treatment of acute fractures of the humerus, and impending and actual pathological fractures of the humerus from metastatic bone disease.

For more detailed procedural information including Warnings, Cautions, Risks & Contraindications, please see the respective IlluminOss Surgical Technique Guide, Package insert or visit www.illuminooss.com
